

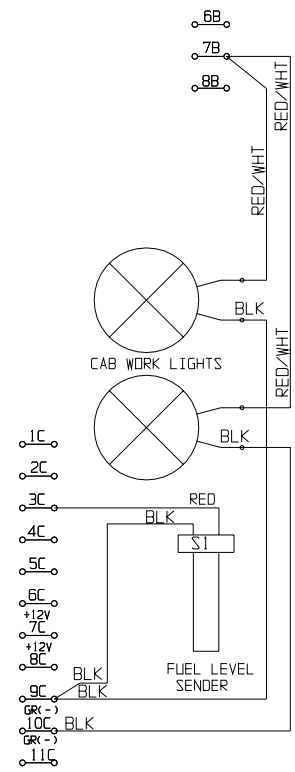
- CHASSIS FUNCTIONS
- 1A W1/1A FUEL SUT OFF SOLENDIO
 - 2A W2/2A START RELAY (+ SIDE)
 - 3A W3/3A FUEL PUMP (+ SIDE)
 - 4A SPARE
 - 5A W5/5A GLOW PLUG
 - 6A W7/7A OIL PRESSURE SENDER
 - 7A W8/8A COOLANT TEMPERATURE
 - 8A W10/10A START RELAY (- SIDE)
 - 9A W15/15A PARK BRAKE VALVE
 - 10A W16/16A LOW BRAKE PRESSURE WARNING
 - 11A W23/23A REAR AXLE FLOAT VALVE
 - 12A W24/24A LEVEL LOCKOUT /24B REAR BYPASS
 - 13A W25/25A LEFT SWAY LOCKOUT
 - 14A W26/26A RIGHT SWAY LOCKOUT
 - 15A W62/62A RIGHT D/R SWITCH N.O.
 - 16A W63/63A LEFT D/R SWITCH COMMON
 - 17A W58/58A RIGHT D/R SWITCH N.C.
 - 18A SPARE

- TS-B
- 1B W35/28/28A SWAY LIMIT OVERRIDE-IN
 - 2B W29/29A SWAY LIMIT OVERRIDE-OUT
 - 3B W34/34A BOOM ANGLE LIMIT
 - 4B W36/36A STEER MODE 'B'
 - 5B W37/37A STEER MODE 'A'
 - 6B W39/39A REAR AXLE CENTER SWITCH
 - 7B W41/41A/41B CAB LIGHTS 12VDC
 - 8B SPARE
 - 9B W66/66A OIL PRESS SW TO HR METER
 - 10B W56/56A LEFT D/R UP
 - 11B W55/55A LEFT D/R DOWN
 - 12B W54/54A RIGHT D/R UP
 - 13B W53/53A RIGHT D/R DOWN
 - 14B W59/59A USED FOR XRM945/737 ONLY
 - 15B W60/60A LEFT D/R SWITCH N.C.
 - 16B W61/61A LEFT D/R SWITCH N.O.

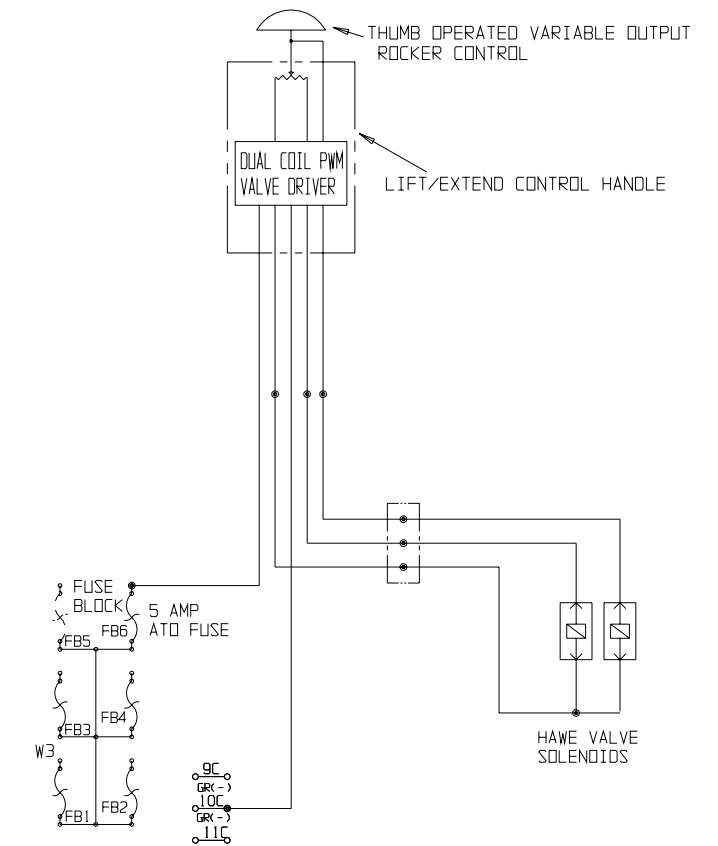
- TS-C
- 1C W43/43A HORN
 - 2C W44/44A BACKUP ALARM/LIGHT
 - 3C W45/45B FUEL LEVEL CAB SIDE ONLY
 - 4C W51/51A OIL TEMPERATURE SWITCH
 - 5C W11A ALTERNATOR INITIATE (D-)
 - 6C +12V SWITCHED 12VDC
 - 7C +12V
 - 8C
 - 9C GROUND (-)
 - 10C
 - 11C
 - 12C SPARE

CAB SUPPLEMENTAL WIRING

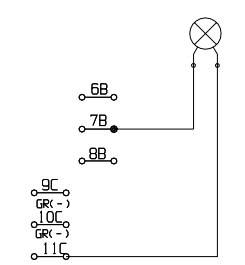
ADDED WIRING HARNESS FOR XRM945 WITH LOCKING REAR AXLE



INSTALLED ON ASSEMBLY LINE ROUTE THROUGH FRAME TUBING



ELECTRA-PROPORTIONAL FORK TILT CONTROL



FLASHING AMBER BEACON OR ANY OTHER LIGHTS OFF THE STANDARD CONSOLE LIGHT SWITCH

- NOTES:
- UNLESS OTHERWISE INDICATED ALL WIRES ARE 16 AWG. THOSE WITH 18 AWG INDICATED MAY ALSO BE 16 AWG
 - UNLABELED AND Bxxx LABELED GROUND WIRES ARE BLACK 16 AWG UNLESS NOTED OTHERWISE.
 - ALL WIRES LABELED Wxxx ARE WHITE 16 AWG.
 - NUMBERED WIRES WITH A COMMON LETTER SUFFIX MAY BE DAISY CHAINED

FRESNO ENGINEERING DESIGN GROUP 5493 EAST OLIVE AVE. FRESNO CALIFORNIA 93727		DESCRIPTION		ECO	DRN	DATE
		CAD FILE:	DRN: GLC	DATE: 9/16/04	SCALE: NONE	
THE INFORMATION CONTAINED IN THIS DRAWING IS THE SOLE PROPERTY OF FRESNO ENGINEERING DESIGN GROUP. ANY REPRODUCTION IN WHOLE OR IN PART WITHOUT THE WRITTEN PERMISSION OF FRESNO ENGINEERING DESIGN IS PROHIBITED.		TITLE: SUPPLEMENTAL WIRING AND OPTIONS				SHT 6/6
MACHINE: XRM945R1/XRM1045		DWG. NO. 25207-000		REV		