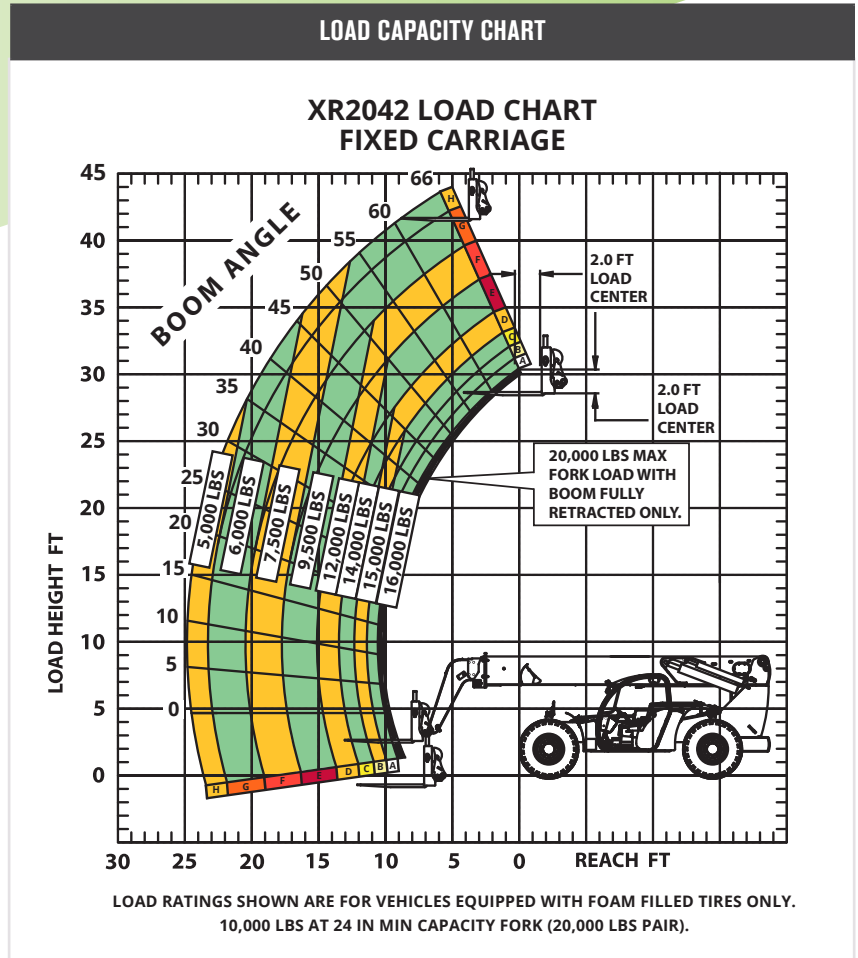


SPECIFICATIONS		
Lift capacity	20,000 lbs	9,072kg
Max lift height	42'	12.80m
Forward reach	24' 10"	7.56m
Frame leveling L/R	8°	
Weight*	42,820 lbs	19,422kg
Engine (Cummins 3.8L)	130 hp (Tier 4F)	
Axles	Dana 213	
Transmission	Dana T20000	
Fuel capacity	72 gal	272.5L
Tires	foam filled 17.5 x 25	
Hydraulic flow (per min)	49 gal	185.4L
Hydraulic pressure	4,000 psi	275.7bar
Hydraulic oil capacity	58 gal	219.5L
Length to fork face	26' 1"	7.95m
Width	102"	2.59m
Height	8' 11"	2.71m
Wheelbase	147"	3.73m
Ground clearance	15"	381mm
Turning radius	15' 10"	4.82m

\*Weight based on open cab model with foam filled tires.



### STANDARD FEATURES

360° visibility	Ductile steel manifold
Suspension seat	Easy cab mounted grab handles
Easy service access	Master disconnect switch
Protected tilt & extend cylinders	Boom lift point
Steel hydraulic & fuel tanks	Manual lowering valve (cylinders)
Long life Lexan labels	Large cross section boom
Suspended pedals	Easy tie downs
Large capacity fuel tank	"Y" frame handle
Trunnion mounted sway cylinders	Heavy duty pre-cleaner
Melonite pins	Additional high pressure hydraulic filter
Standard auxiliary hydraulics	Individual gauges/switches
Steel dash	Steel hood
Center mounted powertrain	Solid steel plate chassis
Long life boom rollers	Rear axle stabilization (RAS)
Cab step	Back up alarm with light
Dual batteries	Electrical aux hydraulic control