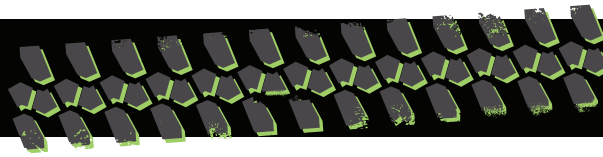


# XR1044-B



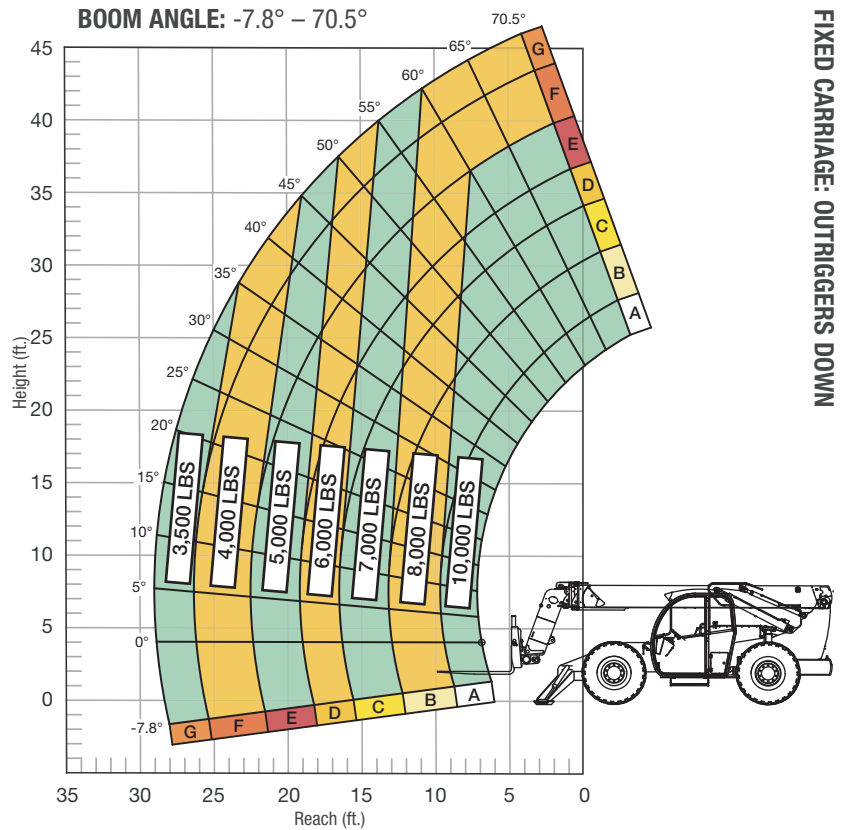
**B** CLASS  
CARRIAGE  
**HIGH PIVOT**  
ROLLER BOOM

## SPECIFICATIONS

|                          |                       |          |
|--------------------------|-----------------------|----------|
| Lift capacity            | 10,000 lbs            | 4,535kg  |
| Max lift height          | 44'                   | 13.41m   |
| Forward reach            | 28' 10"               | 8.8m     |
| Frame leveling L/R       | 11°                   |          |
| Weight*                  | 31,320 lbs            | 14,206kg |
| Engine (Cummins 3.8L)    | 74 hp HT (Tier 4F)    |          |
| Axles                    | ZF MST3055 / 3060     |          |
| Transmission             | ZF 3WG94              |          |
| Fuel capacity            | 50 gal                | 189L     |
| Tires                    | foam-filled 15.5 x 25 |          |
| Hydraulic flow (per min) | 49 gal                | 185.4L   |
| Hydraulic pressure       | 3,500 psi             | 241.3bar |
| Hydraulic oil capacity   | 62 gal                | 234.6L   |
| Length to fork face      | 21'                   | 6.4m     |
| Width                    | 101"                  | 2.56m    |
| Height                   | 8'                    | 2.43m    |
| Wheelbase                | 125"                  | 3.18m    |
| Ground clearance         | 16.5"                 | 419mm    |
| Turning radius           | 12'                   | 3.65m    |

\*Preliminary weight based on open cab model with foam filled tires.

## LOAD CAPACITY CHART



24" LOAD CENTER

Load ratings shown are for vehicles equipped with foam-filled or solid tires. Load includes weight of any rigging. 5,000 lbs. at 24" minimum capacity/fork (10,000 lbs./pair).

## STANDARD FEATURES

|                                   |   |
|-----------------------------------|---|
| 360° operator visibility          | Ductile steel manifold                    |
| Suspension seat                   | Easy cab mounted grab handles             |
| Easy service access               | Master disconnect switch                  |
| Protected tilt & extend cylinders | Boom lift point                           |
| Steel hydraulic & fuel tanks      | Manual lowering valve (cylinders)         |
| Long life Lexan labels            | Large cross section boom                  |
| Heavy duty boom chains            | Easy tie downs                            |
| Suspended pedals                  | Heavy duty pre-cleaner                    |
| Large capacity fuel tank          | Additional high pressure hydraulic filter |
| Trunnion-mounted sway cylinders   | Individual gauges/switches                |
| Melonite pins                     | Steel hood                                |
| Standard auxiliary hydraulics     | Solid steel plate chassis                 |
| Steel dash                        | Rear axle stabilization (RAS)             |
| Long life boom rollers            | Back up alarm with light                  |
| Electrical aux hydraulic control  | Dual batteries                            |
| Center-mounted powertrain         | Limited slip front axle                   |
| Cab step                          |   |

