

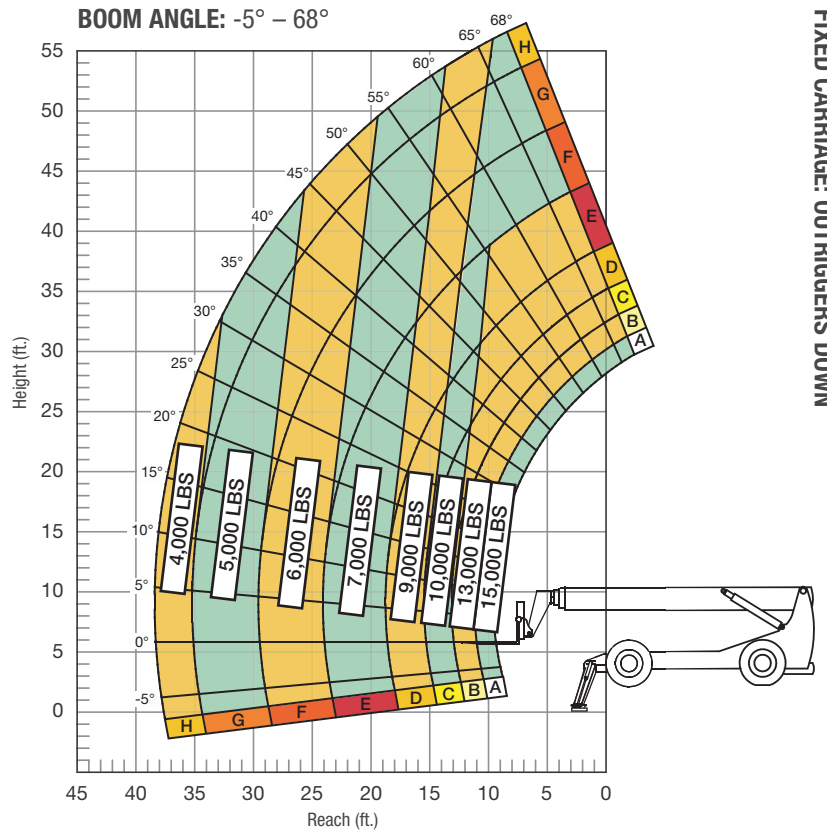
SPECIFICATIONS

Lift capacity	15,000 lbs	6,804kg
Max lift height	55'	16.76m
Forward reach	38' 5"	11.7m
Frame leveling L/R	11°	
Weight*	38,460 lbs	17,445kg
Engine (Cummins 3.8L)	120 hp (Tier 4F)	
Axles	Dana 213	
Transmission	Dana T20000	
Fuel capacity	100 gal	378.5L
Tires	foam-filled 15.5 x 25	
Hydraulic flow (per min)	49 gal	185.4L
Hydraulic pressure	3,800 psi	262bar
Hydraulic oil capacity	62 gal	234.7L
Length to fork face	25' 9"	7.84m
Width	101"	2.56m
Height	8' 3"	2.51m
Wheelbase	141"	3.58m
Ground clearance	16.5"	419mm
Turning radius	14'	4.62m

*Weight based on open cab model with foam filled tires.



LOAD CAPACITY CHART



24" LOAD CENTER

Rear axle must be locked and outriggers firmly against ground. Load ratings shown are for vehicles equipped with foam-filled or solid tires. Load includes weight of any rigging. 7,500 lbs. at 24" minimum capacity/fork (15,000 lbs./pair).

STANDARD FEATURES

360° operator visibility	Ductile steel manifold
Suspension seat	Easy cab mounted grab handles
Easy service access	Master disconnect switch
Protected tilt & extend cylinders	Boom lift point
Steel hydraulic & fuel tanks	Manual lowering valve (cylinders)
Long life Lexan labels	Large cross section boom
Heavy duty boom chains	Easy tie downs
Suspended pedals	Heavy duty pre-cleaner
Large capacity fuel tank	Additional high pressure hydraulic filter
Trunnion-mounted sway cylinders	Steel hood
Melonite pins	Solid steel plate chassis
Standard auxiliary hydraulics	Rear axle stabilization (RAS)
Steel dash	Back up alarm with light
Long life boom rollers	Dual batteries
Center-mounted powertrain	"Y" frame handle
Cab step	Wider outrigger stance