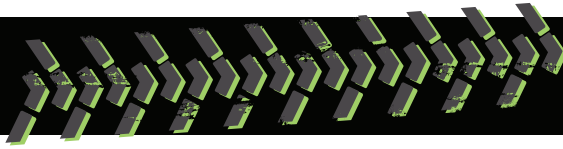


XR1570-C



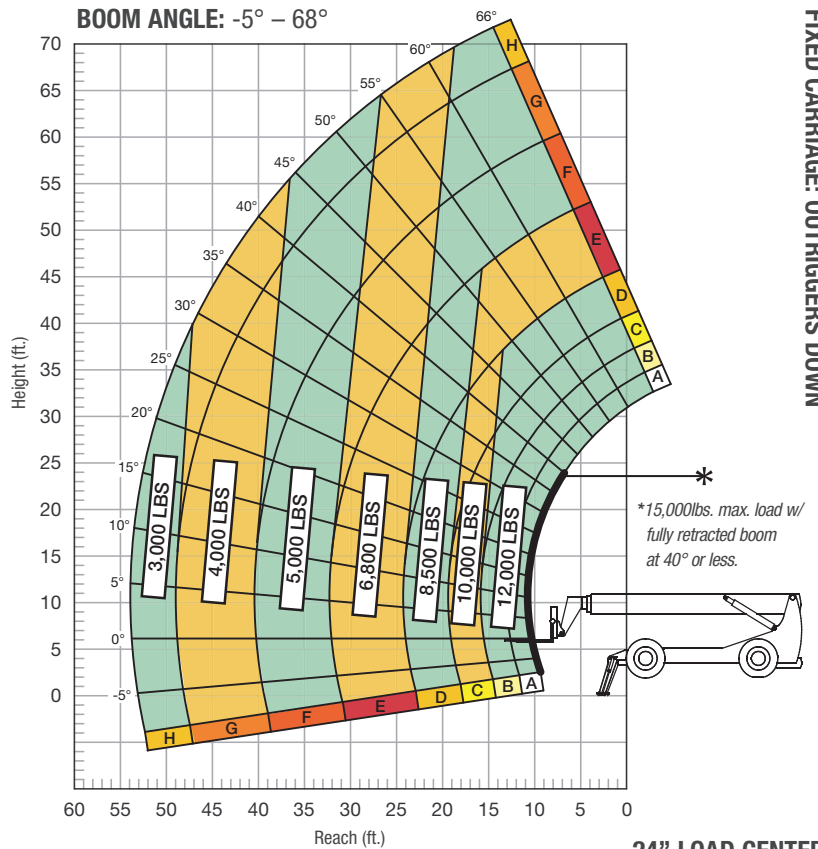
C CLASS
CARRIAGE
**HIGH
CAPACITY
ROLLER BOOM**

SPECIFICATIONS

Lift capacity	15,000 lbs	6,804kg
Max lift height	70'	21.33m
Forward reach	53' 10"	16.40m
Frame leveling L/R	8°	
Weight*	48,480 lbs	21,997kg
Engine (Cummins 3.8L)	134 hp (Tier 4F)	
Axles	Dana 213	
Transmission	Dana T20000	
Fuel capacity	72 gal	272.5L
Tires	foam-filled 17.5 x 25	
Hydraulic flow (per min)	49 gal	185.4L
Hydraulic pressure	4,000 psi	275.7bar
Hydraulic oil capacity	58 gal	219.5L
Length to fork face	26' 6"	8.07m
Width	102"	2.59m
Height	8' 11"	2.71m
Wheelbase	147"	3.73m
Ground clearance	15"	381mm
Turning radius	15' 10"	4.82m

*Weight based on open cab model with foam filled tires.

LOAD CAPACITY CHART



Rear axle must be locked and outriggers firmly against ground. Load ratings shown are for vehicles equipped with foam-filled tires only. 7,500 lbs. at 24" minimum capacity/fork (15,000 lbs./pair).



STANDARD FEATURES

360° operator visibility	Ductile steel manifold
Suspension seat	Easy cab mounted grab handles
Easy service access	Master disconnect switch
Protected tilt & extend cylinders	Boom lift point
Steel hydraulic & fuel tanks	Manual lowering valve (cylinders)
Long life Lexan labels	Large cross section boom
Heavy duty boom chains	Easy tie downs
Suspended pedals	Heavy duty pre-cleaner
Large capacity fuel tank	Additional high pressure hydraulic filter
Trunnion-mounted sway cylinders	Steel hood
Melonite pins	Solid steel plate chassis
Standard auxiliary hydraulics	Rear axle stabilization (RAS)
Steel dash	Back up alarm with light
Long life boom rollers	Dual batteries
Center-mounted powertrain	"Y" frame handle
Cab step	Wider outrigger stance
Electric aux hydraulic control	