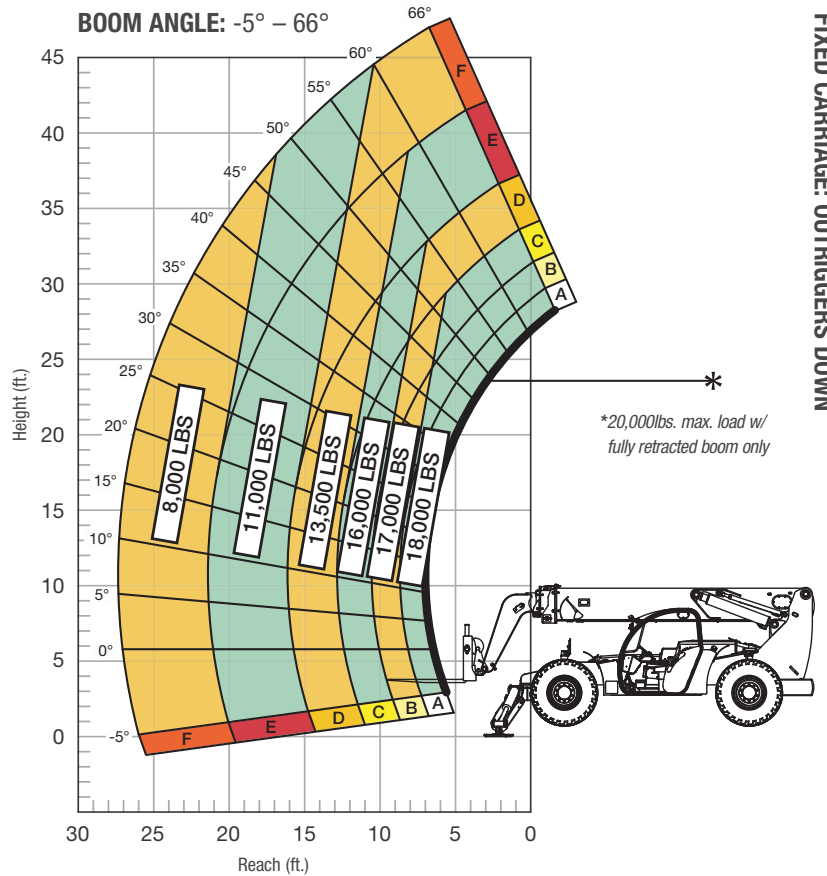


SPECIFICATIONS

Lift capacity	20,000 lbs	9,072kg
Max lift height	45'	13.71m
Forward reach	27' 4"	8.33m
Frame leveling L/R	8°	
Weight*	46,300 lbs	21,000kg
Engine (Cummins 3.8L)	134 hp (Tier 4F)	
Axles	Dana 213	
Transmission	Dana T20000	
Fuel capacity	72 gal	272.5L
Tires	foam-filled 17.5 x 25	
Hydraulic flow (per min)	49 gal	185.4L
Hydraulic pressure	4,000 psi	275.7bar
Hydraulic oil capacity	58 gal	219.5L
Length to fork face	22' 6"	6.85m
Width	102"	2.59m
Height	8' 11"	2.71m
Wheelbase	147"	3.74m
Ground clearance	15"	381mm
Turning radius	15' 10"	4.82m

*Weight based on open cab model with foam filled tires.

LOAD CAPACITY CHART



Load ratings shown are for vehicles equipped with foam-filled or solid tires. 10,000 lbs. at 24" minimum capacity/fork (20,000 lbs./pair).

STANDARD FEATURES

360° operator visibility	Ductile steel manifold
Suspension seat	Easy cab mounted grab handles
Easy service access	Master disconnect switch
Protected tilt & extend cylinders	Boom lift point
Steel hydraulic & fuel tanks	Manual lowering valve (cylinders)
Long life Lexan labels	Large cross section boom
Cab step	Easy tie downs
Suspended pedals	Heavy duty pre-cleaner
Large capacity fuel tank	Additional high pressure hydraulic filter
Trunnion-mounted sway cylinders	Individual gauges/switches
Melonite pins	Steel hood
Standard auxiliary hydraulics	Solid steel plate chassis
Steel dash	Rear axle stabilization (RAS)
Long life boom rollers	Back up alarm with light
Electrical aux hydraulic control	Dual batteries
Center-mounted powertrain	"Y" frame handle
Heavy duty boom chains	

