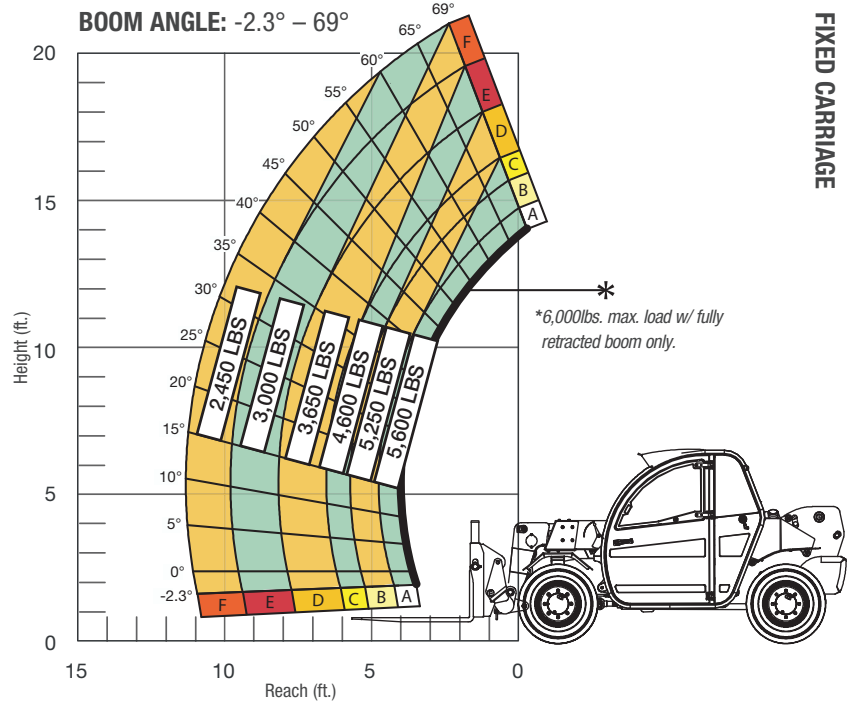


SPECIFICATIONS		
Lift capacity	6,000 lbs	2,721kg
Max lift height	19'	5.79m
Forward reach	11'	3.35m
Frame leveling L/R	N/A	
Weight*	10,300 lbs	4,672kg
Engine (Deutz 2.9L)	74 hp (Tier 4F)	
Axles	Comer 128	
Transmission	Linde	
Fuel capacity	17 gal	64.3L
Tires	12 x 16.5 pneumatic	
Hydraulic flow (per min)	26 gal	98.4L
Hydraulic pressure	3,200 psi	220.6bar
Hydraulic oil capacity	24 gal	90.8L
Length to fork face	12' 8"	3.88m
Width	71"	1.8m
Height	6' 5"	1.9m
Wheelbase	93"	2.36m
Ground clearance	10.8"	274.3mm
Turning radius	11'	3.35m

*Weight based on open cab model with foam filled tires.



LOAD CAPACITY CHART



24" LOAD CENTER

Load ratings shown are for vehicles equipped with air-filled, foam-filled or solid tires. Load includes weight of any rigging. 3,000 lbs. at 24" minimum capacity/fork (6,000 lbs./pair).

STANDARD FEATURES

360° operator visibility	Ductile steel manifold
Suspension seat	Easy cab mounted grab handles
Easy service access	Master disconnect switch
Protected tilt & extend cylinders	Boom lift point
Steel hydraulic & fuel tanks	Manual lowering valve (cylinders)
Long life Lexan labels	Large cross section boom
Suspended pedals	Easy tie downs
Large capacity fuel tank	Heavy duty pre-cleaner
Melonite pins	Additional high pressure hydraulic filter
Standard auxiliary hydraulics	Individual gauges/switches
Steel dash	Solid steel plate chassis
Long life boom rollers	Back up alarm
Electrical aux hydraulic control	Battery
Side mount engine	Limited slip front axle
Hydrostatic rivets	Fiberglass engine hood