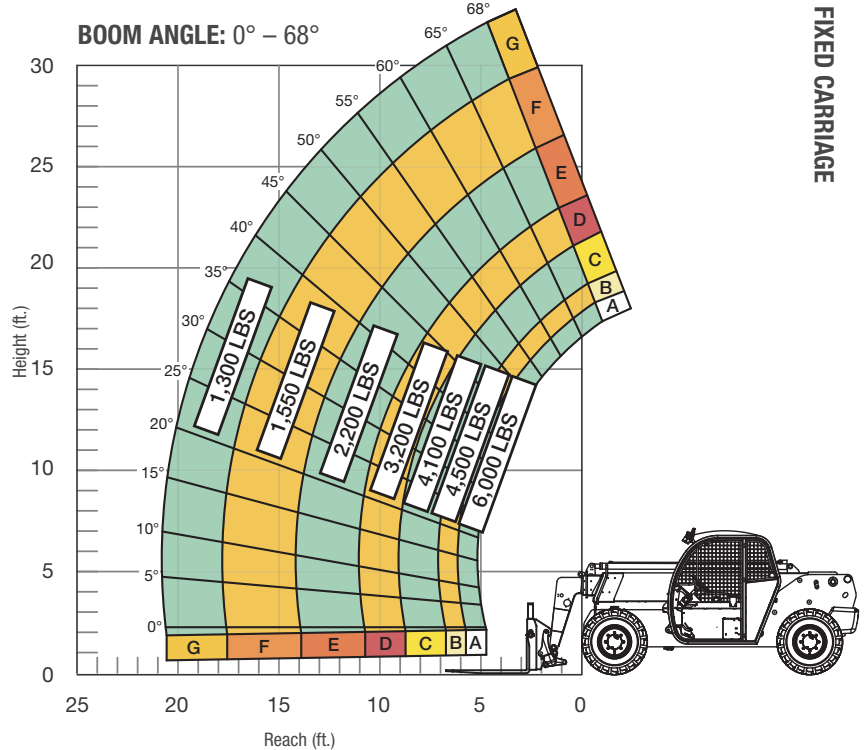


SPECIFICATIONS

Lift capacity	6,000 lbs	2,721kg
Max lift height	30' 7"	9.19m
Forward reach	18' 5"	5.615m
Frame leveling L/R	N/A	
Weight*	13,700 lbs	6,214kg
Engine (Deutz 2.9L)	74 hp (Tier 4F)	
Axles	Comer 128	
Transmission	Linde	
Fuel capacity	26 gal	98.4L
Tires	12.5/80-18 pneumatic	
Hydraulic flow (per min)	26 gal	98.4L
Hydraulic pressure	3,500 psi	241.3bar
Hydraulic oil capacity	50 gal	189.2L
Length to fork face	16' 3"	4.9m
Width	78"	1.9m
Height	7'	2.1m
Wheelbase	116"	2.9m
Ground clearance	14"	355mm
Turning radius	11'	3.35m

*Weight based on open cab model with foam filled tires.

LOAD CAPACITY CHART



Load ratings shown are for vehicles equipped with air-filled, foam-filled or solid tires. Load includes weight of any rigging. 3,000 lbs. at 24" minimum capacity/fork (6,000 lbs./pair).

STANDARD FEATURES

360° operator visibility	Plastic fenders
Large cross section boom	Easy cab mounted grab handles
Easy service access	Tier 4 final compliant engine
Steel hydraulic & fuel tanks	Solid steel plate chassis
Plastic dash with display screen	Melonite pins
Linde hydrostatic 2-speed transmission	Machine lift points
Front and rear limited slip axles	

