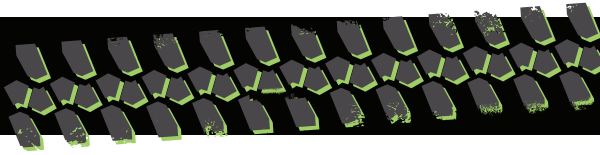


XR944-B



B CLASS
CARRIAGE

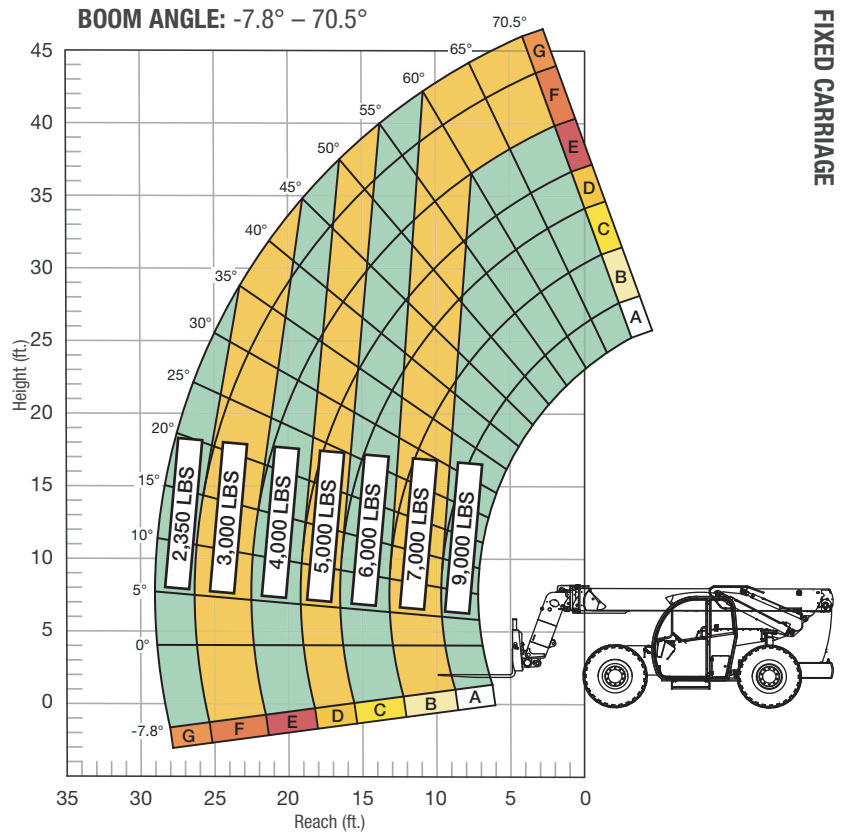
HIGH PIVOT
ROLLER BOOM

SPECIFICATIONS

| | | |
|--------------------------|-----------------------|----------|
| Lift capacity | 9,000 lbs | 4,082kg |
| Max lift height | 44' | 13.41m |
| Forward reach | 28' 10" | 8.8m |
| Frame leveling L/R | 11° | |
| Weight* | 28,700 lbs | 13,022kg |
| Engine (Cummins 3.8L) | 74 hp HT (Tier 4F) | |
| Axles | ZF MST3055 / 3060 | |
| Transmission | ZF 3WG94 | |
| Fuel capacity | 50 gal | 189L |
| Tires | foam-filled 15.5 x 25 | |
| Hydraulic flow (per min) | 49 gal | 185.4L |
| Hydraulic pressure | 3,500 psi | 241.3bar |
| Hydraulic oil capacity | 62 gal | 234.6L |
| Length to fork face | 21' | 6.4m |
| Width | 101" | 2.56m |
| Height | 8' | 2.43m |
| Wheelbase | 125" | 3.18m |
| Ground clearance | 16.5" | 419mm |
| Turning radius | 12' | 3.65m |

*Preliminary weight based on open cab model with foam filled tires.

LOAD CAPACITY CHART



24" LOAD CENTER

Load ratings shown are for vehicles equipped with foam-filled or solid tires. Load includes weight of any rigging. 4,500 lbs. at 24" minimum capacity/fork (9,000 lbs./pair).

STANDARD FEATURES

| | |
|-----------------------------------|-------------------------------------------|
| 360° operator visibility | Ductile steel manifold |
| Suspension seat | Easy cab mounted grab handles |
| Easy service access | Master disconnect switch |
| Protected tilt & extend cylinders | Boom lift point |
| Steel hydraulic & fuel tanks | Manual lowering valve (cylinders) |
| Long life Lexan labels | Large cross section boom |
| Heavy duty boom chains | Easy tie downs |
| Suspended pedals | Heavy duty pre-cleaner |
| Large capacity fuel tank | Additional high pressure hydraulic filter |
| Trunnion-mounted sway cylinders | Individual gauges/switches |
| Melonite pins | Steel hood |
| Standard auxiliary hydraulics | Solid steel plate chassis |
| Steel dash | Rear axle stabilization (RAS) |
| Long life boom rollers | Back up alarm with light |
| Electrical aux hydraulic control | Dual batteries |
| Center-mounted powertrain | Limited slip front axle |
| Cab step | |

