

XR50100-G



G CLASS
CARRIAGE

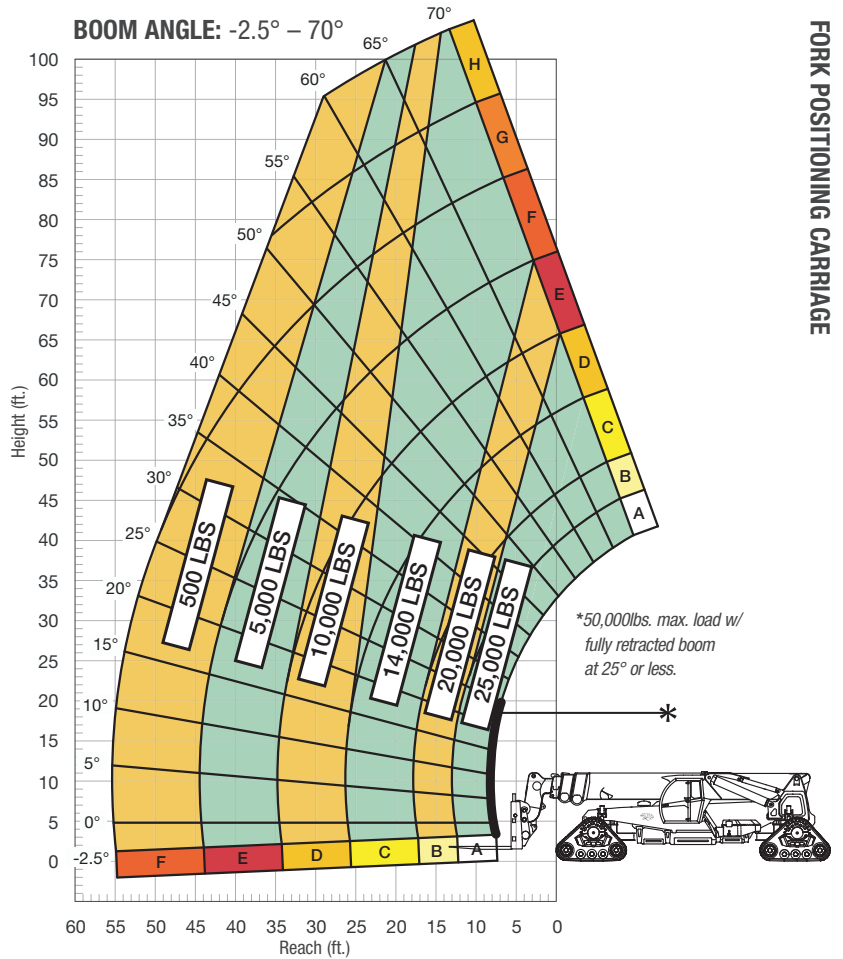
**MEGA
XTREME
CAPACITY
ROLLER BOOM**

SPECIFICATIONS

Lift capacity	50,000 lbs	22,680kg
Max lift height	100'	30.48m
Forward reach	55'	16.76m
Frame leveling L/R	5° below 20	
Weight*	150,000 lbs	68,039kg
Engine (Cummins 4.5L)	675 hp (Tier 4F)	
Axles	Extending (front & rear)	
Transmission	Linde hydrostat	
Fuel capacity	300 gal	1135.6L
Tires	Tracks	
Hydraulic flow (per min)	165 gal	624.6L
Hydraulic pressure	4,000 psi	275.7bar
Hydraulic oil capacity	350 gal	1324.9L
Length to fork face	41'	12.49m
Width (ret./ext.)	144" / 204"	3.65m/5.18m
Height	11' 7"	3.53m
Wheelbase (ret./ext.)	252" / 330"	6.40m/8.38m
Ground clearance	20"	508mm
Turning radius	23'	7.01m

*Weight based on closed cab model with AC and foam filled tires.

LOAD CAPACITY CHART



48" LOAD CENTER

Load ratings shown are for vehicles equipped with tracks in the extended position only. 25,000 lbs. at 48" minimum capacity/fork (50,000 lbs./pair).



STANDARD FEATURES

360° operator visibility	Ductile steel manifold
Suspension seat	Easy cab mounted grab handles
Easy service access	Master disconnect switch
Protected tilt & extend cylinders	Boom lift point
Steel hydraulic & fuel tanks	Manual lowering valve (cylinders)
Long life Lexan labels	Large cross section boom
Large capacity fuel tank	Easy tie downs
Trunnion-mounted sway cylinders	Heavy duty pre-cleaner
Melonite pins	Additional high pressure hydraulic filter
Dual auxiliary hydraulic circuits	Multi-function display screen
Steel dash	Long life boom rollers
Triple batteries	Solid steel plate chassis
Hydraulic cab lift/lower/rotate	Back up alarm with light
Rear back-up camera	