

XR7038-F



F CLASS
CARRIAGE

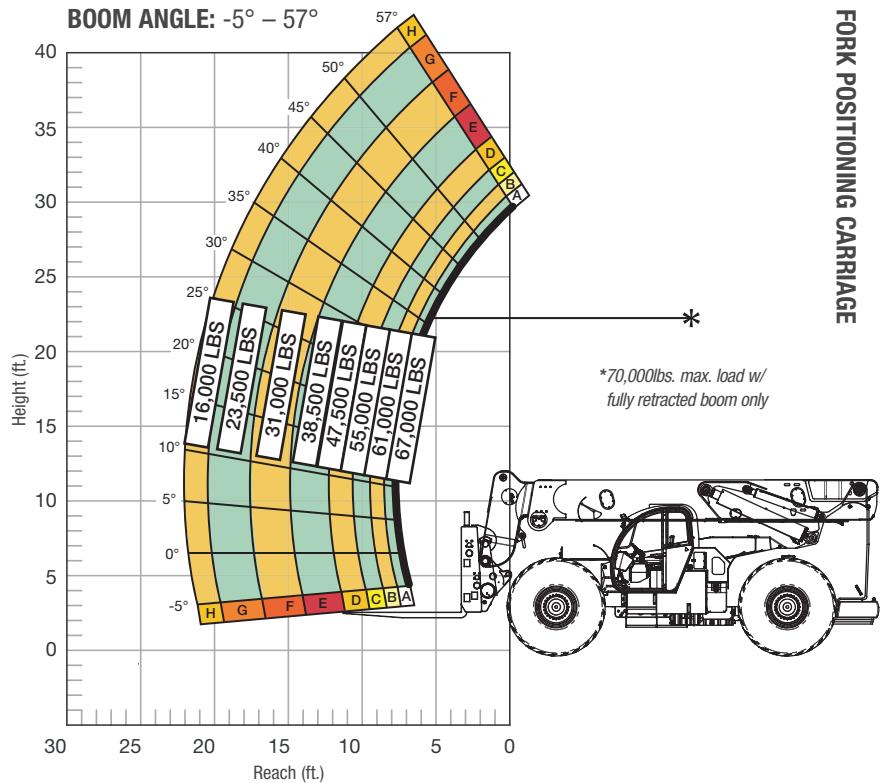
**ULTRA
XTREME
CAPACITY
ROLLER BOOM**

SPECIFICATIONS

Lift capacity	70,000 lbs	31,751kg
Max lift height	38' 2"	11.63m
Forward reach	22'	6.70m
Frame leveling L/R	7°	
Weight*	115,000 lbs	52,163kg
Engine (Cummins 4.5L)	300 hp (Tier 4F)	
Axles	Kessler 101.2228.3	
Transmission	Dana T36000	
Fuel capacity	150 gal	567.8L
Tires	foam-filled 29.5 R29	
Hydraulic flow (per min)	92 gal	348.2L
Hydraulic pressure	4,200 psi	289.5bar
Hydraulic oil capacity	140 gal	529.9L
Length to fork face	27' 9"	8.45m
Width	135"	3.42m
Height	11' 7"	3.53m
Wheelbase	188"	4.77m
Ground clearance	20.5"	520.7mm
Turning radius	24' 6"	7.46m

*Weight based on closed cab model with AC and foam filled tires.

LOAD CAPACITY CHART



48" LOAD CENTER

Load ratings shown are for vehicles equipped with foam-filled tires only.
35,000 lbs. at 48" minimum capacity/fork (70,000 lbs./pair).



STANDARD FEATURES

360° operator visibility	Rear back up camera
Suspension seat	Ductile steel manifold
Easy service access	Easy cab mounted grab handles
Protected tilt & extend cylinders	Master disconnect switch
Steel hydraulic & fuel tanks	Boom lift point
Long life Lexan labels	Manual lowering valve (cylinders)
Suspended pedals	Large cross section boom
Large capacity fuel tank	Easy tie downs
Trunnion-mounted sway cylinders	Heavy duty pre-cleaner
Melonite pins	Additional high pressure hydraulic filter
Standard auxiliary hydraulics	Multi-function display screen
Steel dash	Long life boom rollers
Center-mounted powertrain	Solid steel plate chassis
Dual batteries	Rear axle stabilization (RAS)
Cab step	Back up alarm with light
Front camera on carriage	Xtreme OnSite™ telematics